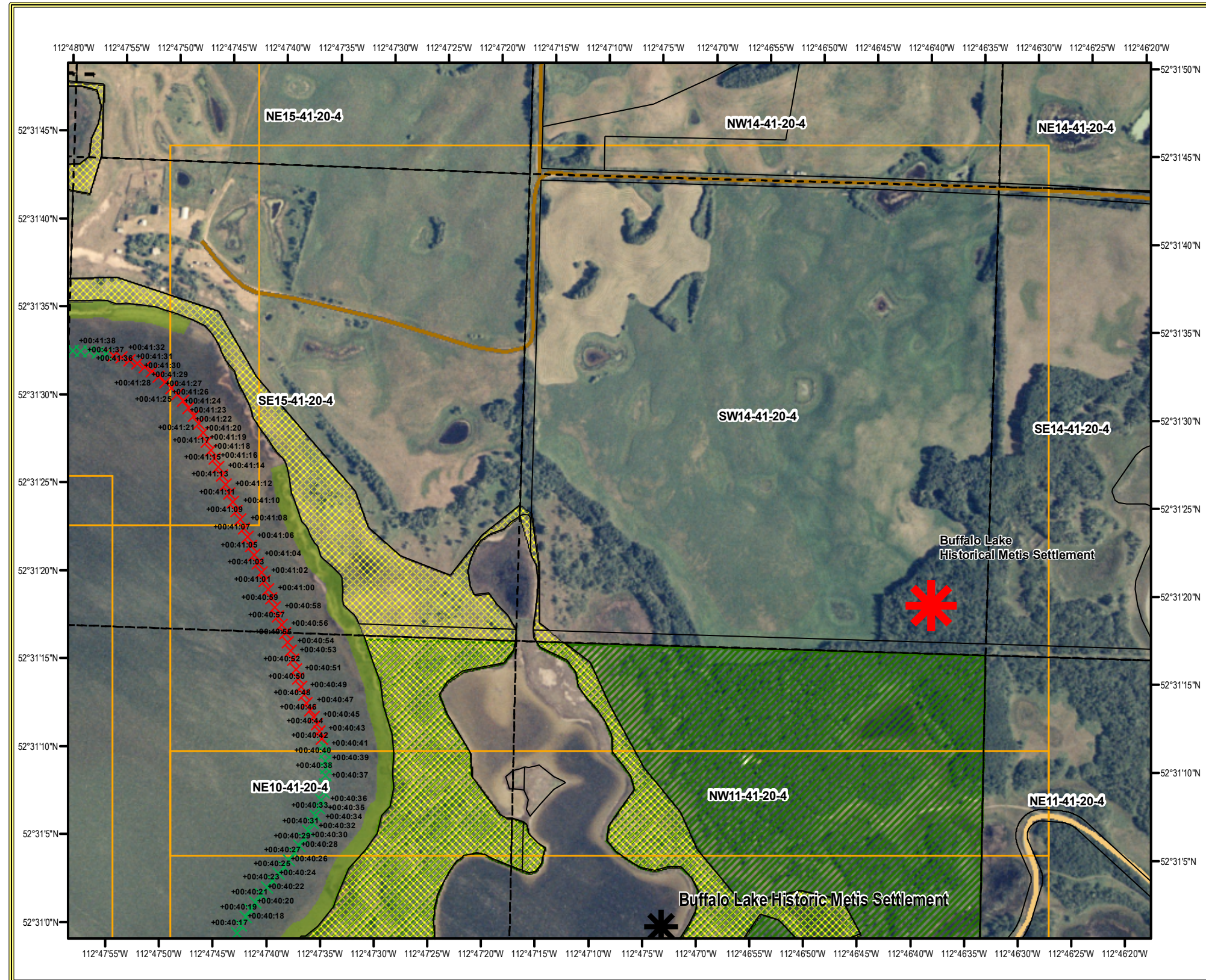
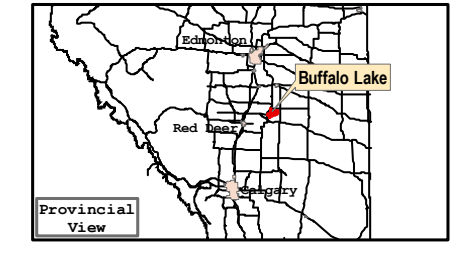
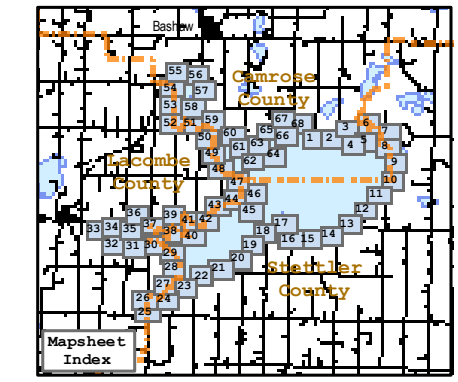


# Mapsheet 7

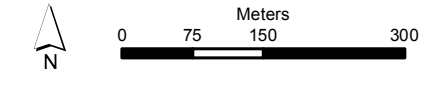


## Mapsheet Index Legend

- Mapsheet index tiles
  - Identified emergent vegetation (Fish & Wildlife Protective Notation, 2002)
  - Buffalo Lk. Metis Settlement Historic Site
  - Provincial Recreation Areas
  - Provincial Parks
  - MDs/Counties
  - Summer Villages
  - Paved
  - Gravel 2 Lane
  - Gravel 1 Lane
  - Unimproved Road
  - Truck Trail
  - Hydrography
  - Known Public Access
  - Public Land
  - Water Management R/W (Right of Way)
  - Quarter Section
  - Surveyed Lots & Right of Ways
- NOTE:  
AENV holds a PNT for the bed and shore around the entire lake.



- ### Legend
- October 25, 2005
- NAME**
- High
  - Low
  - Medium



Red Deer RIU  
Alberta Sustainable Resource Development  
Prairies Area

© 2007 Government of Alberta  
Base Data Provided by the Spatial Data Warehouse Ltd.

The Minister and the Crown provides this information without warranty or representation as to any matter including but not limited to whether the data/information is correct, accurate or free from error, defect, danger, or hazard and whether it is otherwise useful or suitable for any use the user may make of it.

Date: October 16, 2007  
Projection: NAD\_1983\_UTM\_Zone\_12N  
U:\Projects\pub\bu\bu\_1\project\_files\index\_md\september\ov\bu\_1\_r\_overview\_index\_2007.mxd

